



Inspiration & Overview

The products from our Pro Lighting collection can be used both for shop lighting, restaurants / cafe's, hotels and as corporate lighting etc. In this catalogue you will find a selection of our best selling Pro spots and a presentation of the GLOBAL Pro Trac system.

We are always happy to assist you in selecting the correct Pro Lighting system for your specific needs or help you design a professional lighting plan - all you have to do is ask...

Why history matters

Right now you are most likely in the process of considering buying new lighting. You are faced with what may seem as difficult choices and many new terms to understand. You can buy your new lighting from many different suppliers, but not many can offer what really matters - history!

We have more than 25 years experience in the European lighting industry and have worked with many thousands of clients through the years. Formerly we were known as Scan Studio and have manufactured and developed our own lighting under that brand. In 2017, as a part of rebranding our company, we have changed our name to ANTIDARK. Our core values are still the same;

To offer cutting edge lighting solutions at competitive pricing worldwide.

Please take a moment and consider the following scenario;

You place your lighting investment with a new supplier without any track record. Your new lighting looks good, but after a while you experience fading light and defects. You wish to replace the defective lamps, and would even like to expand your system with similar lamps. However, now you may be faced with a problem; - your supplier has gone out of business and this is exactly why history matters!

History equals consistency, experience and peace of mind with your investment.

Make the smart choice and work with us. Rest assured that we will assist you in the entire process and also be here for you in many decades to come.

We hope you enjoy this brief inspirational brochure and look forward assisting you choosing the right lighting for your company or project.

S7 3000K 35W LED SPOT



Available as Crisp Color LED on request



ORDERING

Art.no.	Color	EAN
20079301-13	White	5706872018550
20079302-13	Black	5706872018567
20079309-13	Silver	5706872018574

**5 YEAR
WARRANTY**



GENERAL INFO

Lightsource type	LED - COB/CREE
Lightsource	Included
Driver watt	44.0W Philips
Lightsource watt	35.0W
System watt	38.0W
Supply voltage	230V
Lumen output	3300lm
Lumen pr. Watt	94 lm/W
Color temperature	3000K
RA / CRI	CRI 90 / CRI 80 as option
Light angle	25° / 45°
Warranty	5 years
Adapter	Global GA-69
IP class	IP 20

DETAILS

Colors	Black,white,silver
Indoor use	Yes
Outdoor use	-
Factory replaceable lightsource	Yes
Lamp rotation	90° vertical 355° horizontal

MATERIALS

Base	Aluminium
Screen	-

DIMMING

Phase dimmable	As option
1-10V dimmable	As option
DALI dimmable	-
Push dimmable	-

MEASUREMENTS

Height	175mm
Width	150mm
Diameter spot	Ø100mm

ENERGY RATING

Energy class	A -> A++
--------------	----------

PACKAGING

Sales box	1 pcs
Outer box	12 pcs
Pallet	144 pcs

S7 4000K 35W LED SPOT



Available as Crisp Color LED on request



ORDERING

Art.no.	Color	EAN
20079401-13	White	5706872019397
20079402-13	Black	5706872019403
20079409-13	Silver	5706872019410

**5 YEAR
WARRANTY**



Without Flicker

GENERAL INFO

Lightsource type	LED - COB/CREE
Lightsource	Included
Driver watt	44.0W Philips
Lightsource watt	35.0W
System watt	38.0W
Supply voltage	230V
Lumen output	3300lm
Lumen pr. Watt	94 lm/W
Color temperature	4000K
RA / CRI	CRI 90 / CRI 80 as option
Light angle	25° / 45°
Warranty	5 years
Adapter	Global GA-69
IP class	IP 20

DETAILS

Colors	Black,white,silver
Indoor use	Yes
Outdoor use	-
Factory replaceable lightsource	Yes
Lamp rotation	90° vertical 355° horizontal

MATERIALS

Base	Aluminium
Screen	-

DIMMING

Phase dimmable	As option
1-10V dimmable	As option
DALI dimmable	-
Push dimmable	-

MEASUREMENTS

Height	175mm
Width	150mm
Diameter spot	Ø100mm

ENERGY RATING

Energy class	A -> A++
--------------	----------

PACKAGING

Sales box	1 pcs
Outer box	12 pcs
Pallet	144 pcs



Next generation crisp colors..



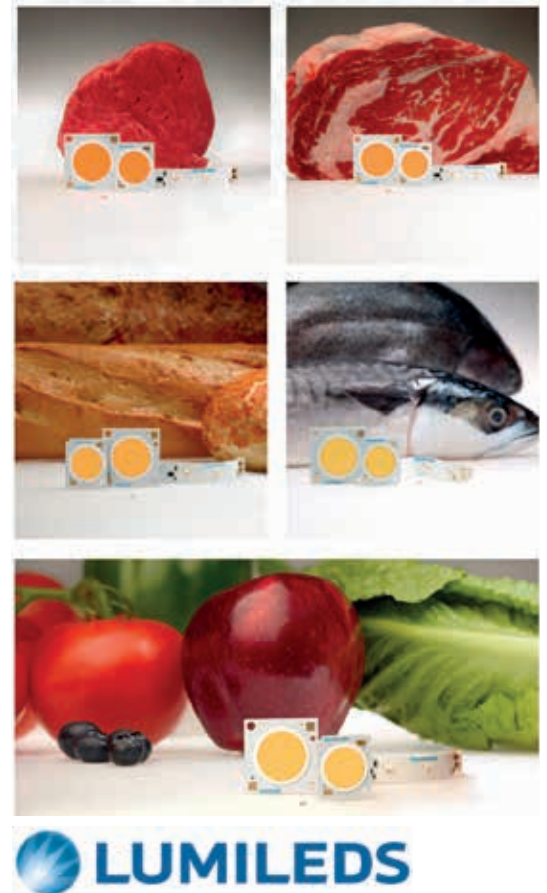
Products never looked so good!

Moving ahead from the first generations of LED chips, you can now outfit your new lamps with the next generation LED chips from Lumileds with stunning crisp colors.

This new generation of LED chips enhances the products natural colors and thereby increase customer buying desire, all done without increasing power consumption.

Food have never looked this good in artificial light! Imagine presenting your customers with a perfect red steak, healthy strong coloured vegetables, shinning fresh fish and bakery ready to die for! This is the perfect cutting-edge LED solution for the entire food industry, including supermarkets, special stores, restaurants, cafe 's etc.

Textiles presented in the real and strong colors as invisioned by the fashion designers. A pair of blue jeans turns deeply blue and the red shirt truly stands out in the clothing rack. Fashion retailers that wants to have an competing edge should look no further - but instead hurry up and implement this new LED technology before the competition does!



New energy saving reflectors!

We are constantly challenging ourselves to create new and energy efficient lighting products, which are good for the environment and your electrical bill.

We are using the latest generation of energy saving reflectors that offer **6-7% extra luminaire efficiency** and at the same time **increases the center intensity with 13-61%** compared to the latest generation of reflectors.

The increase in luminaire efficiency and center intensity comes at no extra cost to your electrical bill, as we are simply enhancing the way the light is disbursed from the LED chip.



S8 3000K 50W LED SPOT



Available as Crisp Color LED on request



ORDERING

Art.no.	Color	EAN
20089301-13	White	5706872018437
20089302-13	Black	5706872018444
20089309-13	Silver	5706872018451

**5 YEAR
WARRANTY**



GENERAL INFO

Lightsource type	LED - COB/CREE
Lightsource	Included
Driver watt	60.0W Osram
Lightsource watt	50.0W
System watt	54.0W
Supply voltage	230V
Lumen output	4900lm
Lumen pr. Watt	98 lm/W
Color temperature	3000K
RA / CRI	CRI 90 / CRI 80 as option
Light angle	25° / 45°
Warranty	5 years
Adapter	Global GA-69
IP class	IP 20

DETAILS

Colors	Black,white,silver
Indoor use	Yes
Outdoor use	-
Factory replaceable lightsource	Yes
Lamp rotation	90° vertical 355° horizontal

MATERIALS

Base	Aluminium
Screen	-

DIMMING

Phase dimmable	Available as option
1-10V dimmable	Available as option
DALI dimmable	-
Push dimmable	-

MEASUREMENTS

Height	175mm
Width	165mm
Diameter spot	Ø115mm

ENERGY RATING

Energy class	A -> A++
--------------	----------

PACKAGING

Sales box	1 pcs
Outer box	6 pcs
Pallet	144 pcs

S8 4000K 50W LED SPOT



GENERAL INFO

Lightsource type	LED - COB/CREE
Lightsource	Included
Driver watt	60.0W Osram
Lightsource watt	50.0W
System watt	54.0W
Supply voltage	230V
Lumen output	4900lm
Lumen pr. Watt	98 lm/W
Color temperature	4000K
RA / CRI	CRI 90 / CRI 80 as option
Light angle	25° / 45°
Warranty	5 years
Adapter	Global GA-69
IP class	IP 20

DETAILS

Colors	Black,white,silver
Indoor use	Yes
Outdoor use	-
Factory replaceable lightsource	Yes
Lamp rotation	90° vertical 355° horizontal

MATERIALS

Base	Aluminium
Screen	-

DIMMING

Phase dimmable	Available as option
1-10V dimmable	Available as option
DALI dimmable	-
Push dimmable	-

MEASUREMENTS

Height	175mm
Width	165mm
Diameter spot	Ø115mm

ENERGY RATING

Energy class	A -> A++
--------------	----------

PACKAGING

Sales box	1 pcs
Outer box	6 pcs
Pallet	144 pcs

Available as Crisp Color LED on request



ORDERING

Art.no.	Color	EAN
20089401-13	White	5706872019427
20089402-13	Black	5706872019434
20089409-13	Silver	5706872019441

**5 YEAR
WARRANTY**





Every store is unique..

During the last 25 years we have provided lighting for thousands of stores worldwide. We have worked with small independent store owners and some of the largest retail chains - which are still clients today. One of the things that we have learned over the years is that every store is unique! Different locations, floor plans, products and customer segments all plays a big role when designing the perfect store lighting solution.

Our main focus is always to create a lighting solution that is durable, energy efficient and most importantly make your products and store look stunningly beautiful. In todays lighting industry there are hundreds or even thousands of suppliers that you can choose from - but only a few can offer you:

- A wide range of long-term tested high quality lighting products.
- New lamps and spots are developed using the latest cutting-edge technology.
- Peace of mind; Many of our products are normally available for day-to-day shipping.
- Efficient; We have a global network of installers that knows our products and how to properly install them.
- Many long-term happy clients from all over the world; Ask us for references!
- 5 year warranty and replacement on all our products; **no questions asked!**

A division of our company is specialized in complete store fitting & design, which means that we can even offer you a complete turnkey solution; Taking your store from an empty room to a vibrant place for your customers to enjoy! Get in touch and let us design your new store - nomatter what industry you are in, we can help!

S10 3000K 32W LED SPOT



Available as Crisp Color LED on request



ORDERING

Art.no.	Color	EAN
20109301-1	White	5706872018635
20109302-1	Black	5706872018642
20109309-1	Silver	5706872018673

**5 YEAR
WARRANTY**



GENERAL INFO

Lightsource type	LED - COB/CREE
Lightsource	Included
Driver watt	38.0W Philips
Lightsource watt	32.0W
System watt	38.0W
Supply voltage	230V
Lumen output	3300lm
Lumen pr. Watt	103 lm/W
Color temperature	3000K
RA / CRI	CRI 90
Light angle	26° / 37°
Warranty	5 years
Adapter	Global GA-69
IP class	IP 20

DETAILS

Colors	Black,white,silver
Indoor use	Yes
Outdoor use	-
Factory replaceable lightsource	Yes
Lamp rotation	90° vertical 355° horizontal

MATERIALS

Base	Aluminium
Screen	-

DIMMING

Phase dimmable	Available as option
1-10V dimmable	Available as option
DALI dimmable	-
Push dimmable	-

MEASUREMENTS

Height	180mm
Width	90mm
Diameter spot	Ø90mm

ENERGY RATING

Energy class	A -> A++
--------------	----------

PACKAGING

Sales box	1 pcs
Outer box	8 pcs
Pallet	128 pcs

S11 3000K 21W LED SPOT



Available as Crisp Color LED on request



ORDERING

Art.no.	Color	EAN
20119301-23	White	5706872019298
20119302-23	Black	5706872019304

**5 YEAR
WARRANTY**



Without Fan

GENERAL INFO

Lightsource type	LED - COB/CREE
Lightsource	Included
Driver watt	28.0W Philips
Lightsource watt	21.0W
System watt	24.0W
Supply voltage	230V
Lumen output	2300lm
Lumen pr. Watt	109 lm/W
Color temperature	3000K
RA / CRI	CRI 90
Light angle	26° / 49°
Warranty	5 years
Adapter	Global GA-69
IP class	IP 20

DETAILS

Colors	Black,white
Indoor use	Yes
Outdoor use	-
Factory replaceable lightsource	Yes
Lamp rotation	90° vertical 355° horizontal

MATERIALS

Base	Aluminium
Screen	-

DIMMING

Phase dimmable	Available as option
1-10V dimmable	Available as option
DALI dimmable	-
Push dimmable	-

MEASUREMENTS

Height	248mm
Width	80mm
Diameter spot	Ø80mm

ENERGY RATING

Energy class	A -> A++
--------------	----------

PACKAGING

Sales box	1 pcs
Outer box	12 pcs
Pallet	128 pcs



Light sets the scene in your hotel..

Lighting plays an important role in any hotel making the guests feel welcome in a nice and pleasant atmosphere. We can assist you in choosing the correct and most energy efficient lighting for your new hotel or renovation, with a natural focus on the specific feel you want your hotel to represent. Let us briefly highlight some of the areas that requires your lighting considerations:

Rooms: Create the perfect room with ambient lighting (LED strips), bedlighting, desk lamps/floor lamps. Bring that extra luxury feel to the bathroom with the best in bathroom lighting.

Reception/front desk: Welcome your guests in a beautiful light setting, that makes registration a breeze.

Hall ways: Your guests should feel safe and comfortable walking your hallways

Restaurant/bar: Create that special feeling that let's your guests spend hours of dining or socializing.

Kitchen: Your kitchen staff should have the best possible lighting in their daily working environment

Service rooms/basement: Choose quickly illuminating and energy efficient lighting for your service staff.

Parking: Illuminate your parking areas with high efficient vandal protected lighting.

Safety lighting: A law requirement that must be met. Clear and efficient EXIT signages etc.

Outdoor lighting/signage: Make your outside space present itself best possible. Garden lighting, driveways and building signage all makes your hotel a place to visit and be seen.

Get in touch with us and let us plan the hotel of your dreams in close cooperation with your architects and interior designers.



Public building & project lighting

When you are planning a new public building or residential project both have atleast one thing in common; You need cheap energy efficient lighting - and lots of it!

Great looking product sales boxes are of no interest as every little cent counts in your budget. We acknowledge this by delivering you the best possible quality lighting within your budget - ofcourse only packaged to protect the lamps.

One of the other aspects to consider is the costs associated with lighting installation. Through our 25+ years in the lighting industry, we know how electricians think - and know how to make lighting installations as efficient and cost saving as possible.

Through our own wide lighting program we can help you with lighting for bathrooms, hallways, office lighting, reception, parking, outdoor, driveway, kitchen, cafeteria, meeting rooms, signage etc. You can even choose us to source specific products for you - we have a global network of the best partners in the lighting industry.

Book a “no-strings-attached” meeting with us and let us show you the difference you get from at lighting supplier that cares about your project and goes the extra mile to meet your deadlines.

S12 3000K 25W LED SPOT



GENERAL INFO

Lightsource type	LED - COB/CREE
Lightsource	Included
Driver watt	32.0W Philips
Lightsource watt	25.0W
System watt	29.0W
Supply voltage	230V
Lumen output	2700lm
Lumen pr. Watt	108 lm/W
Color temperature	3000K
RA / CRI	CRI 90
Light angle	23° / 46°
Warranty	5 years
Adapter	Global GA-69
IP class	IP 20

DETAILS

Colors	Black,white
Indoor use	Yes
Outdoor use	-
Factory replaceable lightsource	Yes
Lamp rotation	90° vertical 355° horizontal

MATERIALS

Base	Aluminium
Screen	-

DIMMING

Phase dimmable	Available as option
1-10V dimmable	Available as option
DALI dimmable	-
Push dimmable	-

MEASUREMENTS

Height	260mm
Width	96mm
Diameter spot	Ø96mm

ENERGY RATING

Energy class	A -> A++
--------------	----------

PACKAGING

Sales box	1 pcs
Outer box	9 pcs
Pallet	128 pcs

Available as Crisp Color LED on request



ORDERING

Art.no.	Color	EAN
20129301-23	White	5706872019274
20129302-23	Black	5706872019281

**5 YEAR
WARRANTY**



S14 3000K 25W LED SPOT



Available as Crisp Color LED on request



ORDERING

Art.no.	Color	EAN
20149302-13	Black	5706872019267

**5 YEAR
WARRANTY**

GENERAL INFO

Lightsource type	LED - COB/CREE
Lightsource	Included
Driver watt	32.0W Philips
Lightsource watt	25.0W
System watt	29.0W
Supply voltage	230V
Lumen output	2700lm
Lumen pr. Watt	108 lm/W
Color temperature	3000K
RA / CRI	CRI 90
Light angle	23° / 45°
Warranty	5 years
Adapter	Global GA-69
IP class	IP 20

DETAILS

Colors	Black
Indoor use	Yes
Outdoor use	-
Factory replaceable lightsource	Yes
Lamp rotation	90° vertical 355° horizontal

MATERIALS

Base	Aluminium
Screen	-

DIMMING

Phase dimmable	Available as option
1-10V dimmable	Available as option
DALI dimmable	-
Push dimmable	-

MEASUREMENTS

Height	252mm
Width	168mm
Diameter spot	Ø158mm

ENERGY RATING

Energy class	A -> A++
--------------	----------

PACKAGING

Sales box	1 pcs
Outer box	4 pcs
Pallet	96 pcs



Energy saving corporate lighting

As earlier mentioned under Public building & project lighting there are many areas where we can assist you in corporate lighting. So instead of repeating ourselves, we want to set focus on the immense energy savings you can make if you own a warehouse or production facility.

Have you ever considered that you are losing money every time you turn on the lights in your production or warehouse?

For many years fluorescent lamps has been the defacto choice to light up these locations. The first moving companies quickly switched to the first generations of LED for their workzones. Today there are even more efficient and cost saving LED lighting solutions, that will give you a better work environment and save money compared to using old and outdated fluorescent lamps.

The next generation LED tubes are up to 30% more energy efficient than old fluorescent tubes. The new LED tubes are available in a wide range of colors, can provide directional lighting and even be dimmable. Compared to old fluorescent lamps the new LED tubes has an average of 20.000+ hours extra lifetime.

Contact us and let us calculate your savings in replacing your old and outdated fluorescent tubes and light fixtures with the next generation LED tubes and fixtures.



The right dining atmosphere!

When people go to your restaurant or café they don't only come for the food or coffee - but also to enjoy the atmosphere you have created. Furniture plays a big role in setting the right atmosphere, but lighting plays an even more important role.

Light is not just light; By using the correct modern LED lighting your guests will enjoy a visually red steak and crispy coloured vegetables. Ambient lighting sets the atmosphere for your guests and makes them choose you for their next dining or café experience.

Put us in contact with your interior designers and let us together create the perfect lighting solution that both matches your brand and your customers' expectations. We can help you with all your lighting needs including; Diner table lighting, ambient lighting, LED strips, spots etc.

Finally don't forget your staff in the kitchen that deserves to have the best possible working environment - we have the perfect lighting to keep your staff motivated, efficient and happy.

EASY 3F 18W LED SPOT



GENERAL INFO

Lightsource type	LED - COB/BRIDGELUX
Lightsource	Included
Driver watt	25.0W
Lightsource watt	18.0W
System watt	22.0W
Supply voltage	230V
Lumen output	1370 lm
Lumen pr. Watt	76 lm/W
Color temperature	2700K
RA / CRI	CRI 90
Light angle	28°
Warranty	5 years
Adapter	Global GA-69
IP class	IP 20

DETAILS

Colors	Black,white
Indoor use	Yes
Outdoor use	-
Factory replaceable lightsource	Yes
Lamp rotation	90° vertical 355° horizontal

MATERIALS

Base	Aluminium
Screen	-

DIMMING

Phase dimmable	Yes
1-10V dimmable	Yes
DALI dimmable	-
Push dimmable	-

MEASUREMENTS

Height	130mm
Width	100mm
Diameter spot	Ø100mm

ENERGY RATING

Energy class	A -> A++
--------------	----------

PACKAGING

Sales box	1 pcs
Outer box	10 pcs
Pallet	180 pcs

ORDERING

Art.no.	Color	EAN
2-215-20-1	White	5706872018338
2-215-20-2	Black	5706872018345

**5 YEAR
WARRANTY**



Without FAN

The GLOBAL Trac pro system

GLOBAL Trac is the most flexible way of creating elegant and appropriate lighting. Established in the lighting industry as one of the oldest and most reliable track systems with almost unlimited possibilities.

We offer you the complete range of the system including a wide variety of GLOBAL accessories. You are always welcome to ask us for help in getting the correct components for your lighting needs.



GLOBAL ^{MAC} *pro*



Global track 1 mtr XTS 4100
Black - Art.no: 3-328-10-2
White - Art.no: 3-328-10-1
Grey - Art.no: 3-328-10-9



Global track 2 mtr XTS 4200
Black - Art.no: 3-328-20-2
White - Art.no: 3-328-20-1
Grey - Art.no: 3-328-20-9



Global track 3 mtr XTS 4300
Black - Art.no: 3-328-30-2
White - Art.no: 3-328-30-1
Grey - Art.no: 3-328-30-9



Global L-connector XTS 34
Black - Art.no: 4-428-07-2
White - Art.no: 4-428-07-1
Grey - Art.no: 4-428-07-9



Global L-connector XTS 35
Black - Art.no: 4-428-08-2
White - Art.no: 4-428-08-1
Grey - Art.no: 4-428-08-9



Global T-connector XTS 36
Black - Art.no: 4-428-09-2
White - Art.no: 4-428-09-1
Grey - Art.no: 4-428-09-9



Global T-connector XTS 37
Black - Art.no: 4-428-10-2
White - Art.no: 4-428-10-1
Grey - Art.no: 4-428-10-9



Global T-connector XTS 39
Black - Art.no: 4-428-11-2
White - Art.no: 4-428-11-1
Grey - Art.no: 4-428-11-9



Global T-connector XTS 40
Black - Art.no: 4-428-12-2
White - Art.no: 4-428-12-1
Grey - Art.no: 4-428-12-9



Global X-connector XTS 38
Black - Art.no: 4-428-13-2
White - Art.no: 4-428-13-1
Grey - Art.no: 4-428-13-9



Global C-connector XTS 14
Black - Art.no: 4-428-03-2
White - Art.no: 4-428-03-1
Grey - Art.no: 4-428-03-9



Global F-connector XTS 23
Black - Art.no: 4-428-05-2
White - Art.no: 4-428-05-1
Grey - Art.no: 4-428-05-9



Global C-connector XTS 24
Black - Art.no: 4-428-06-2
White - Art.no: 4-428-06-1
Grey - Art.no: 4-428-06-9



Global E-connector XTS 11
Black - Art.no: 4-428-01-2
White - Art.no: 4-428-01-1
Grey - Art.no: 4-428-01-9



Global C-connector XTS 12
Black - Art.no: 4-428-02-2
White - Art.no: 4-428-02-1
Grey - Art.no: 4-428-02-9



Global connector XTS 21
Black - Art.no: 4-428-04-2
White - Art.no: 4-428-04-1
Grey - Art.no: 4-428-04-9



Global adapter GA-69
Black - Art.no: 4-428-28-2
White - Art.no: 4-428-28-1
Grey - Art.no: 4-428-28-9



Global end cover XTS 41
Black - Art.no: 4-428-14-2
White - Art.no: 4-428-14-1
Grey - Art.no: 4-428-14-9



Global stabilisor SKB18
Black - Art.no: 4-428-17-2
White - Art.no: 4-428-17-1
Grey - Art.no: 4-428-17-9



Global W-suspension SKB16
Black - Art.no: 4-428-16-2
White - Art.no: 4-428-16-1
Grey - Art.no: 4-428-16-9

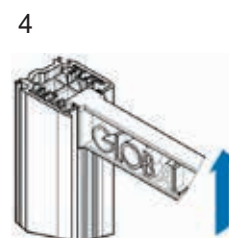
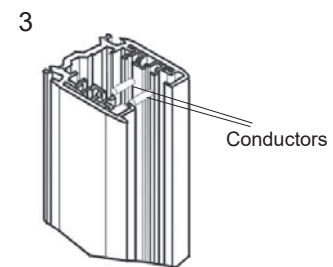
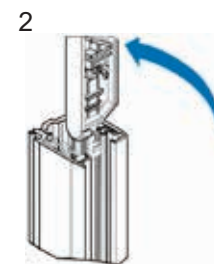
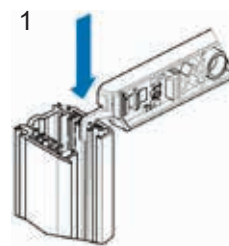
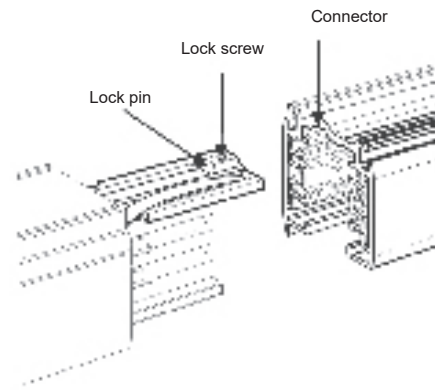
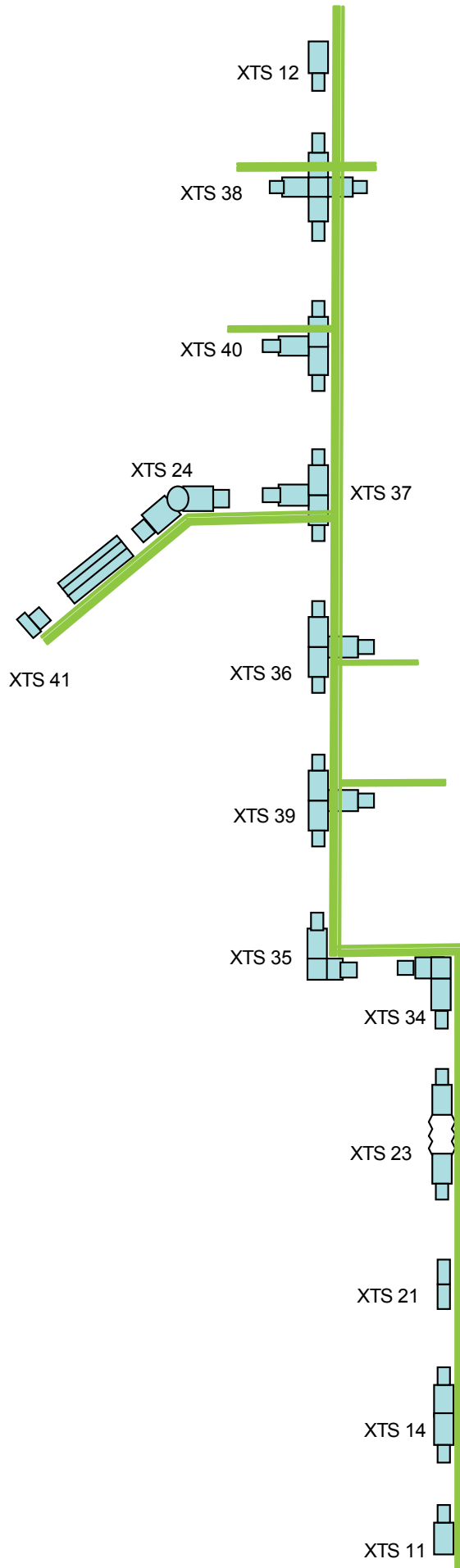


Global ceiling mount SKB12
Black - Art.no: 4-428-15-2
White - Art.no: 4-428-15-1
Grey - Art.no: 4-428-15-9



Global ceiling outlet GA70
Black - Art.no: 4-428-24-2
White - Art.no: 4-428-24-1
Grey - Art.no: 4-428-24-9

Earth conductor placement diagram - Global track pro system



ANTIDARK by scan studio
Damgaardvej 2, DK-5500 Middelfart, Denmark
info@antidark.dk | Tel.: +45 63 41 88 88 | www.antidark.dk